

# Inevitável

BASE  $\text{♩} = 70$

Pedro Valença e Filipe de Oliveira

## Introdução

G(add9) C/E G/B C(add9) Em<sup>7</sup> C/E G/B

## Estrofe 1

8 C(add9) C/E G/D C/E G/D C/E

14 G/D Am<sup>7</sup> G/B D/F# Am<sup>7</sup> G/B C(add9)

## Coro 1

19 G(add9) D/F# Em<sup>7</sup> G/D C(add9) G/B Am<sup>7</sup> D(sus4) G(add9) D/F#

24 Em<sup>7</sup> G/D C(add9) G/B Am<sup>7</sup> Eb° Em<sup>7</sup> G/D A(add9)/C#

## Interlúdio

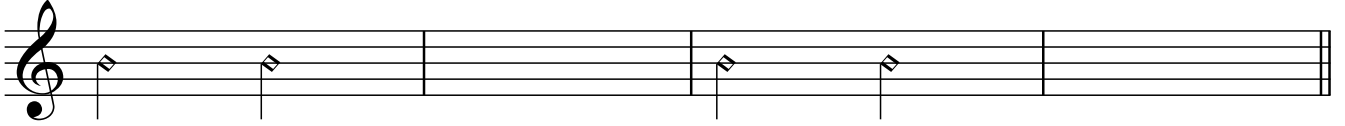
29 C(add9) G/B Am<sup>7</sup> C/D G(add9) C/E G/B C(add9)

35 C(add9) F/A C/E F(add9)

## Estrofe 2

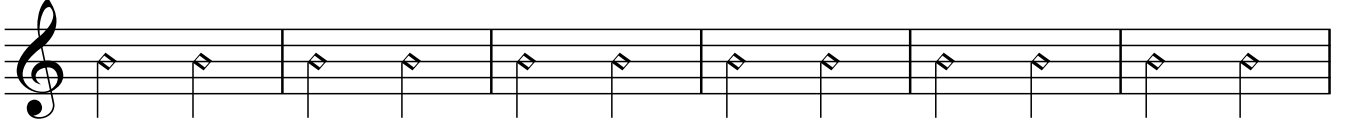
39 F/A C/G F/A C/G F/A C/G

45 Dm<sup>7</sup> C/E G/B Dm<sup>7</sup> C/E F(add9)

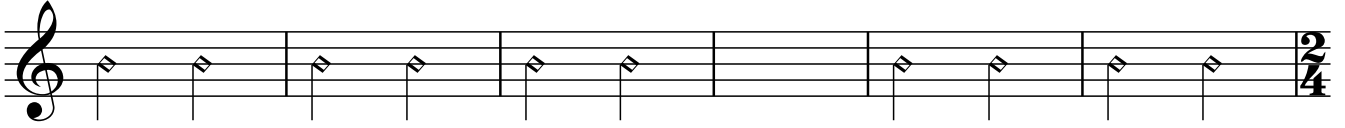


## Coro 2

49 C(add9) G/B Am<sup>7</sup> C/G F(add9) C/E Dm<sup>7</sup> F/G C(add9) G/B Am<sup>7</sup> C/G

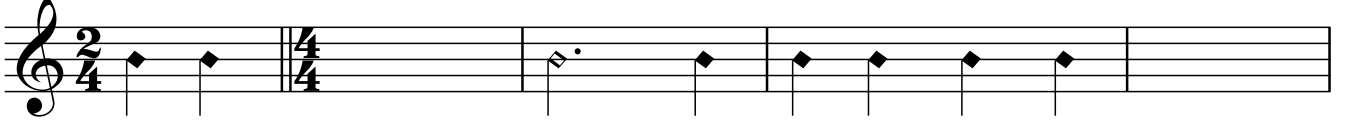


55 F(add9) C/E Dm<sup>7</sup> A<sup>b</sup>° Am<sup>7</sup> C/G D(add9)/F# F(add9) C/E Dm<sup>7</sup> C/G

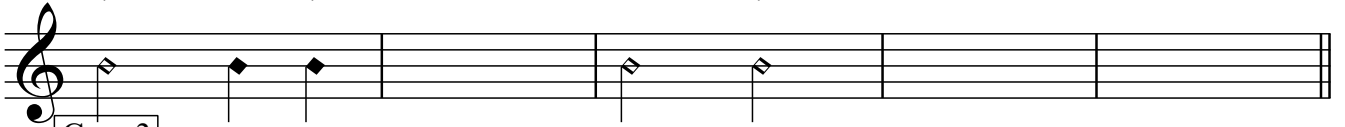


## Ponte

61 G G/F C/E F(add9) G(add9) Am<sup>7</sup> G/B C(add9) C/E F(add9)



66 G/B C C/E F(add9) Dm<sup>7</sup> C/E F(add9)



## Coro 3

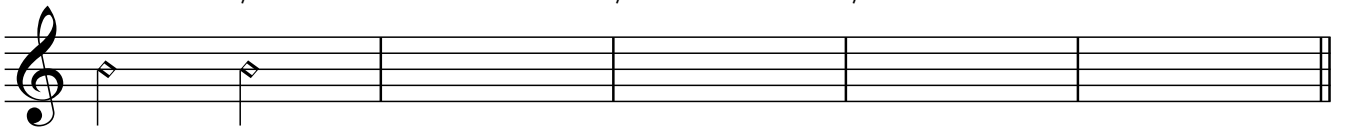
71 C(add9) G/B Am<sup>7</sup> C/G F(add9) C/E Dm<sup>7</sup> F/G C(add9) G/B Am<sup>7</sup> C/G



77 F(add9) C/E Dm<sup>7</sup> A<sup>b</sup>° Am<sup>7</sup> C/G D(add9)/F# F(add9) C/E



82 Dm<sup>7</sup> F/G C(add9) F/A C/E F(add9)



## Final

87 D/F# F(add9) C/E Dm<sup>7</sup> G(sus4) A<sup>b</sup>(add9) B<sup>b</sup>(add9) C(add9)

